

SwedBio

A programme at Stockholm Resilience Centre

Together we create transformative change

*– an invitation to support SwedBio for
the benefit of people and nature*



For a just and sustainable
world where people and
nature live in harmony

We create transformative change – together

At a time of accelerating climate change, ecological breakdown, deepening inequalities, and shrinking space for rights-based and inclusive approaches – the question is no longer whether transformative change is needed, but how it can be enabled in practice.

Strong biodiversity and climate ambition must be matched with grounded, equitable implementation. Global commitments will only succeed if they reflect local realities, center diverse knowledge systems, and uphold the rights of the people who steward land, waters and ecosystems.

These essential conditions are too often missing today. Shifts in the global funding landscape are making it harder to sustain the long-term, trust-based work required to connect local realities with decision-making processes. Indigenous and local knowledge rarely reaches national and global decision-making. Rightsholders struggle to participate meaningfully.

SwedBio works to bridge this gap. We operate at the intersection of biodiversity, climate and human rights. For over 20 years, we have been nurturing collaborative partnerships with Indigenous Peoples, local communities, practitioners, policymakers, researchers, and the private sector. Together, we have co-designed effective approaches

that centers justice, reciprocity and respect for all forms of life, creating the conditions for transformative change that is just and sustainable. We facilitate exchange of knowledge and experience to both develop relevant and effective policy, and to implement local, sustainable, scalable, and equitable solutions. Examples include strategic projects on increased food security through agroecological practices in Southeast Asia, enhanced green urban planning with nature-based solutions in Sub-Saharan Africa, and strengthened marine ecosystems through community-led conservation in Latin America.

SwedBio is a catalyst for strengthening locally led initiatives. We provide technical and financial support and enable learning cycles in which practice informs policies that support equitable and resilient implementation.

We support learning, dialogue, and collaborations that shift how problems are framed and how solutions are designed, embedding justice and equity, resilience and sustainability, in practice and policy.

Join us!

As the global funding landscape evolves, SwedBio is seeking strategic and diversified investments from September 2026 onward. They will be used to amplify and scale our long-standing partnerships, addressing biodiversity loss, the climate crisis, and deepening inequalities, working with committed, aligned partners to consolidate, strengthen, and expand our collective impact.

We see the coming years until 2030 as a decisive window for shaping a more just and sustainable future. New funding would give us and partner organisations a chance to further scale already made results and investments in support of transformative change. There is now a timely opportunity for synthesising our results and learnings to make sure they inform

key policy processes and their implementation, starting with COP17 in October 2026, under the Convention on Biological Diversity (CBD) and all the way towards the post-2030 biodiversity and climate frameworks.

We are looking for donors interested in taking onboard parts of the SwedBio programme, or who see a potential in including the entire SwedBio programme in their portfolio. With your support, we shape a future where people and nature thrive.

Together we create transformative change!

Sincerely,
The SwedBio team



www.swed.bio



swedbio@su.se



[linkedin.com/
company/swedbio/](https://linkedin.com/company/swedbio/)

This is SwedBio

For over two decades, SwedBio has nurtured meaningful and effective collaborations to address the most urgent and interconnected challenges of our time: biodiversity loss, the climate crisis, and deepening inequalities. We work through four different thematic workstreams: Urban Nature, Small-scale Fisheries, Agroecology, and Biocultural Diversity.

SwedBio was originally initiated by the Swedish International Development Cooperation Agency (Sida) in 2002 to strengthen environmental commitments. Since 2011, SwedBio has been hosted by the Stockholm Resilience Centre at Stockholm University, with a total annual funding of 40 to 50 million SEK. This transition has enhanced our ability to bridge local practice, policy, and science – enabling inclusive, evidence-based solutions.

Building on extensive experience in supporting locally led implementation and a long-standing legacy of successful engagement in key policy processes with partners, we have developed effective approaches for reaching sustainable results and transformative change through equitable dialogue and a Human Rights-Based Approach.

SwedBio's efforts are underpinned by a strong network of strategic actors. An external evaluation in 2024 identified a high degree of sustainability in our results and management structures providing efficiency and effectiveness.

SwedBio's approaches has helped influence landmark policy outcomes on human rights, gender equality, and Indigenous knowledge, while also enabling local actors to implement those policies in ways that improve food security, livelihoods, climate resilience, and ecosystem health.

OUR VISION

SwedBio envisions a just and sustainable world where people and nature live in harmony.

SwedBio is contributing to effective participation of rightsholders in biodiversity-related processes affecting their lives. Many of the changes SwedBio have contributed to are likely to remain for the foreseeable future, thus characterized by a high degree of sustainability.

- External evaluation findings of SwedBio, 2024*

* Rightshouse. (2024) Mid-term evaluation of SwedBio. Final report. October 4.

OUR MISSION

To address the interconnected biodiversity, climate, and human rights crises, SwedBio nurtures inclusive and equitable collaborations that connect local knowledge and experiences to global policy, enabling transformative solutions for the wellbeing of people and nature.



SwedBio at a glance



SwedBio has a strong capacity for successful and inclusive multi-actor dialogues with participants from practice, policy, and science that bridge different knowledge systems for innovative and effective solutions.

SwedBio has, together with partners, successfully contributed to the inclusion of Indigenous and local knowledge and to several assessments conducted by the Intergovernmental Science Policy Platform on Biodiversity and Ecosystem Services (IPBES), since its establishment in 2012.



SwedBio is a trusted and supportive partner in locally led and context-specific implementation.



SwedBio has a proven track record of enabling meaningful and effective participation of rights holders in shaping sustainability agendas.

The latest external evaluation acknowledges SwedBio's contribution to normative change at the global level, and how this work has translated into national and local action.



20+
YEARS

Of influential engagement in key policy processes, notably the CBD, in close collaboration with partners.

80
MEMBERS

In the influential Human Rights and Biodiversity Working Group, engaging in the CBD, are coordinated by SwedBio since its establishment in 2020.

100%

Of funded partner organisations actively engage in global policy or knowledge processes and have local anchoring.

124

Partner organisations have received support for implementing their initiatives since SwedBio's inception.

2.5

The average number of global policy processes each partner engage in.



Supported projects are grounded in a Human Rights-Based Approach, gender equality, and a conflict-sensitive approach.

30+
COUNTRIES

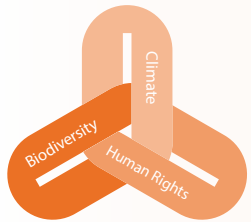
In which SwedBio have supported impactful partnerships.

Theory of Change

PATHWAYS

SwedBio's two impact pathways with...

Knowledge and policy pathway



Partner implementation pathway

ACTIONS

... the actions we take...



ADVANCEMENTS

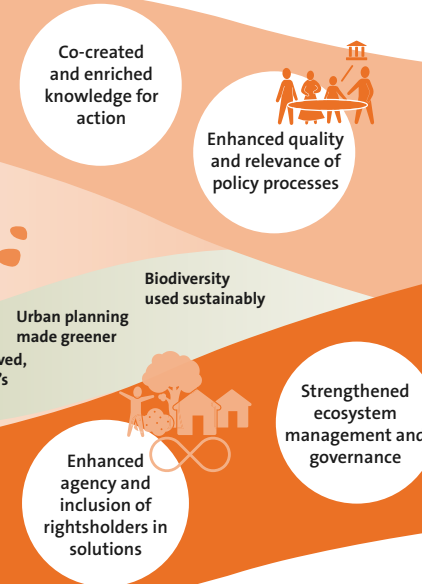
... advance trajectories for change...

- ▶ Increased national policy implementation, supported by local knowledge to national, regional and global policy
- ▶ Implementation of locally led solutions for people and nature



CHANGES

... leading towards long-term changes.



A just and sustainable world where people and nature live in harmony.

Zooming in using Themes



Agroecology



Small-Scale Fisheries



Urban Nature



Biocultural Diversity

SwedBio's added value

A global network that works both ways

Local to global, global to local.

Long-term partnerships with Indigenous Peoples, local communities, practitioners, researchers, governments, and UN actors that create real impact on the ground and influence policy.

Human rights and gender equality at the core

Biodiversity and climate action for the wellbeing of people and nature.

We ensure that groups that are normally left out shape decisions that affect land, food, water, and climate, not just adapt to them.

Bridging rights holders and duty bearers

We connect the people who depend on biodiversity with the institutions that govern it.

From community groups to ministries to UN agencies, we help turn rights into accountability and policy into action.

Proven influence in global policy

From negotiations to adopted text.

SwedBio helped secure human rights, gender equality, Indigenous land rights, and urban biodiversity targets in the Kunming-Montreal Global Biodiversity Framework.

Turning policy into real-world change

Global agreements don't matter unless they reach the local implementers.

We support locally led implementation that strengthens food security, climate resilience, and livelihoods.

The Multiple Evidence Base (MEB)

Scientific, Indigenous, and local knowledge, treated as equals.

A globally recognised method, co-developed with Stockholm Resilience Centre, SwedBio, and our partners, to co-produce knowledge and generate solutions that are credible, legitimate, and culturally grounded.

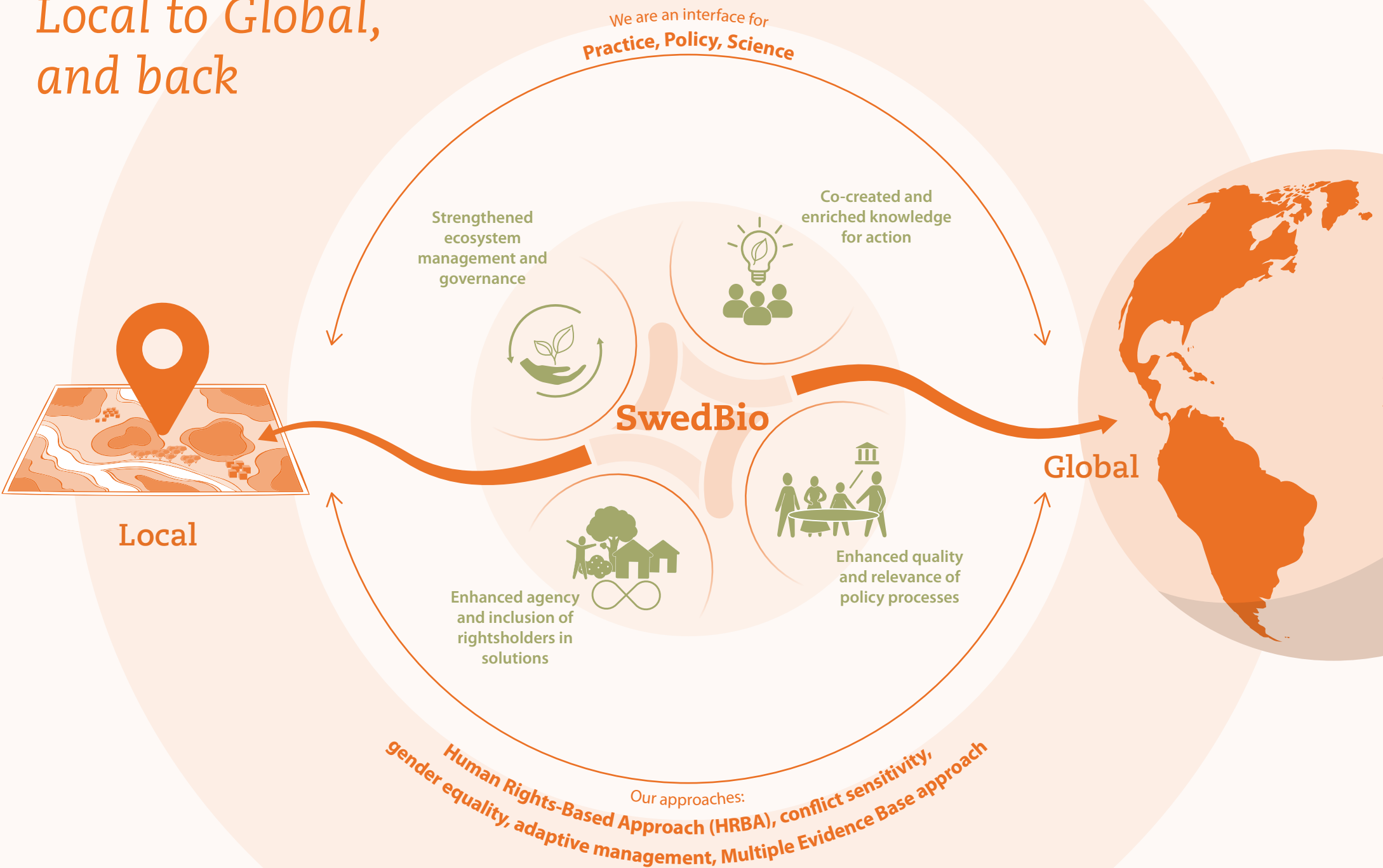
Trusted dialogue and conflict-resolution methods

When people disagree, we help them build solutions.

Our multi-actor dialogues have shaped processes under the CBD and IPBES, unlocking cooperation between governments, practitioners, and researchers.



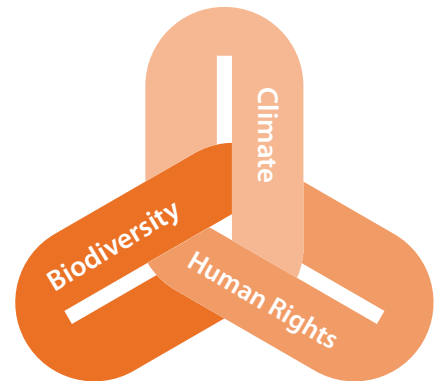
Local to Global, and back



Strategic goals, long-term changes and thematic workstreams

The aim of SwedBio's work is to achieve four strategic goals that all relate to the nexus of climate-biodiversity-human rights:

- **Increased food security** from sustainable agriculture and sustainably governed and managed coastal areas
- **Improved livelihoods** through sustainable value chains and entrepreneurship, with focus on women's opportunities
- **Enhanced green urban planning** with nature-based infrastructure
- **Increased sustainable use of biodiversity** while addressing the underlying causes of its loss



We do this by applying a proven intervention logic to address the interconnected crises of biodiversity loss, climate change, and inequalities. In the *Transformative Change Assessment (2024)*, IPBES highlights the urgent need for deep, fundamental shifts in how people relate to and interact with nature, to halt and reverse biodiversity loss and safeguard life on Earth. The report concludes that weaving together insights from diverse approaches and knowledge systems enhances strategies and actions for transformative change. Based on these insights we work with four long-term changes that will help us achieve our strategic goals in a sustainable and equitable way:

- **Strengthened ecosystem management and governance** through locally led solutions
- **Enhanced quality and relevance of policy processes** in the biodiversity, climate and human rights nexus
- **Co-produced and enriched knowledge for action** toward equitable governance in harmony with nature
- **Enhanced agency, inclusion and equity of rightsholders** in solutions to the biodiversity and climate crises

In this spirit, SwedBio enables equitable dialogues for collaborative and evidence-based learning among local actors, policymakers, practitioners, and researchers. By connecting diverse knowledge systems, we generate impactful solutions. In addition, our support for locally led implementation is enabled by our complementary approach of 'connecting local knowledge to global policy – and vice versa'. We bring a long-standing legacy of collaborating with partners across levels to both inform policy processes and support locally led policy implementation. To ensure relevance and high contextual awareness, our work is channelled through carefully selected thematic workstreams:



Urban Nature



Small-Scale Fisheries



Agroecology



Biocultural Diversity

Storypaths – recent project results

Human Rights & Biodiversity Working Group

A global platform for advancing human rights in biodiversity policy

SwedBio coordinates the Human Rights & Biodiversity Working Group, a network of around 80 members from Indigenous Peoples, local communities, civil society, and NGOs. The group helped secure the recognition of a Human Rights-Based Approach in the Kunming-Montreal Global Biodiversity Framework (KMGBF). Today, it continues to support countries in applying an HRBA in the implementation of the Framework, including reviewing National Biodiversity Strategies and Action Plans to ensure they reflect human rights and include Indigenous and local knowledge.



Biodiversity and Ecosystems Services Network: Connecting local knowledge to global science

Bringing community experience into national and international decision-making

Through the partnership between the Biodiversity and Ecosystem Services Network (BES-Net) and SwedBio, we helped strengthen the use of the Multiple Evidence Base approach in National Ecosystem Assessments in Cambodia, Malawi and Thailand. This ensures that scientific research is complemented by the knowledge of local actors. The results are shared with IPBES, helping global science reflect real experiences from the ground.



Photo: Pernilla Malmer

Agroecological Enterprises and Territorial Markets: Scaling African-led food economies

Strengthening local markets and food sovereignty

SwedBio's partnership with the Alliance for Food Sovereignty in Africa (AFSA) promoted African-led agroecological enterprises and territorial markets as foundations of resilient and equitable food systems. The COVID-19 pandemic revealed the limitations of global agricultural supply chains, while local markets and smallholder farmers sustained food and nutrition needs. With SwedBio support, AFSA has strengthened territorial markets through national forums, leadership training, advocacy, and a continental market database. Active forums in Ghana, Tunisia, Uganda, and Zimbabwe connect market leaders, influence policy, and increase the visibility of agroecological produce. In 2024, targeted trainings in Ghana and Zimbabwe further embedded agroecology in market operations, reinforcing sustainable livelihoods, food security and sovereignty.

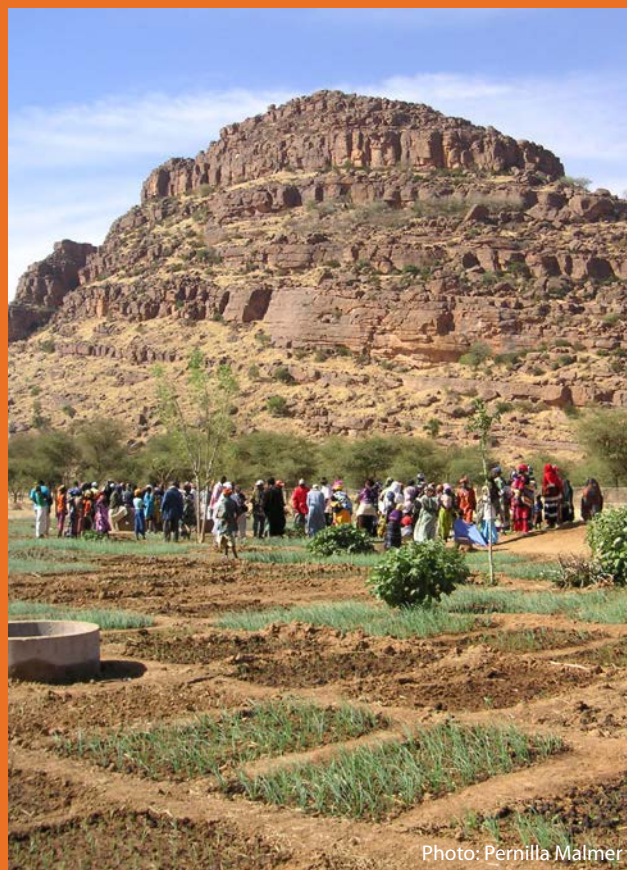


Photo: Pernilla Malmer

Inclusive Conversations: A Human Rights-Based Approach to biodiversity and climate action

Building capacity for just and equitable environmental action

SwedBio and partners organised a series of workshops on how to apply a Human Rights-Based Approach to biodiversity and climate action. The process brought together governments, communities, NGOs, UN actors and researchers, and concluded with a multi-actor dialogue in Cali, Colombia ahead of CBD COP16. Participants highlighted how the workshops helped identify both obstacles and opportunities for integrating human rights into practical climate and biodiversity work.



Securing customary tenure rights for small-scale fishers in India

Locally led mapping to defend land, water and livelihood rights

In coastal India, weak implementation of existing laws has left small-scale fishers without formal recognition of their traditional territories. With support from SwedBio, our partners Social Need Education and Human Awareness Organisation (SNEHA) and Legal Aid to Women Trust (LAW-Trust) worked with the fisher communities in Tamil Nadu to map and document their customary land and water use. This evidence is now being used to claim legal rights to fishing zones, mooring sites, repair areas and settlements.



Photo: IMPACT Kenya

Land conservation done equitably

Indigenous Peoples and local communities leading land conservation

SwedBio supports Indigenous Peoples and local communities in Africa to advance rights-based, inclusive conservation. SwedBio funded the Indigenous Movement for Peace Advancement and Conflict Transformation's (IMPACT) regional organising and advocacy, contributing to the 2022 African Protected Areas Congress meetings and the resulting Indigenous Peoples & local communities' (IPLC) Kigali Declaration and eventually the creation of the Pan-African Alliance for Indigenous Peoples and Local Communities for Conservation (AICA). SwedBio backed regional consultations, Alliance coordination, and the first IPLC-led Conservation Congress in Namibia. The work strengthens advocacy on equitable conservation, land rights and protections for communities facing violations.

Enhanced green urban planning with nature-based infrastructure

Co-designed implementation in African cities to improve human health

SwedBio's urban partner Kounkuey Design Initiative (KDI) has advanced design and implementation of co-produced nature-based solutions in urban infrastructure development, in other words, "green infrastructure" planning using participatory approaches. One example is Embu town in Kenya, where a green infrastructure plan was co-developed with the community of the Dallas informal settlement and the County Government. Continued work is focused on ensuring the green infrastructure plan is incorporated into wider county development frameworks making Embu County a fore runner and inspiring example for other counties in Kenya and beyond.








SwedBio and partners implementing the Kunming-Montreal Global Biodiversity Framework



The adoption of the KMGBF in 2022 marked a key milestone, recognising the rights and contributions of Indigenous Peoples and local communities, the importance of diverse value systems, and the need for a Human Rights-Based Approach in biodiversity action.

With implementation now underway to meet the framework's 23 targets by 2030, SwedBio have reviewed how our own and partners' work relate to the framework's targets.

The targets we contribute to the most are:

-  **Target 22:** Ensure participation in decision-making and access to justice and information related to biodiversity for all
-  **Target 21:** Ensure that knowledge is available and accessible to guide biodiversity action
-  **Target 23:** Ensure gender equality and a gender-responsive approach for biodiversity action
-  **Target 3:** Conserve 30% of land, waters and sea.
-  **Target 10:** Enhance biodiversity and sustainability in agriculture, aquaculture, fisheries and forestry
-  **Target 2:** Restore 30% of all degraded ecosystems
-  **Target 8:** Minimize the impacts of climate change on biodiversity and build resilience

The range of targets addressed reflect how SwedBio enables local action, connects it to global policy processes, and ensures that rightsholders' contributions and knowledge shape decision-making. This strongly aligns with our vision, mission and Theory of Change, proving our intervention logic is sound and that we produce results where it matters.

Interested in supporting SwedBio?

As the global funding landscape evolves, SwedBio is seeking strategic and diversified investments from September 2026 onward. They will be used to amplify and scale our long-standing partnerships, addressing biodiversity loss, the climate crisis, and deepening inequalities, working with committed, aligned partners to consolidate, strengthen, and expand our collective impact.

We see the coming years until 2030 as a decisive window for shaping a more just and sustainable future. New funding would give us and partner organisations a chance to further scale already made results and investments in support of transformative change. There is now a timely opportunity for synthesising our results and learnings to make sure they inform key policy processes and their implementation, starting with COP17 in October 2026, under the Convention on Biological Diversity (CBD) and all the way towards the post-2030 biodiversity and climate frameworks.

We are looking for donors interested in taking onboard parts of the SwedBio programme, or who see a potential in including the entire SwedBio programme in their portfolio. With your support, we shape a future where people and nature thrive.

Together we create transformative change!

Let's connect and we will tell you more!



www.swed.bio



swedbio@su.se



[linkedin.com/
company/swedbio/](https://linkedin.com/company/swedbio/)

SwedBio

A programme at Stockholm Resilience Centre